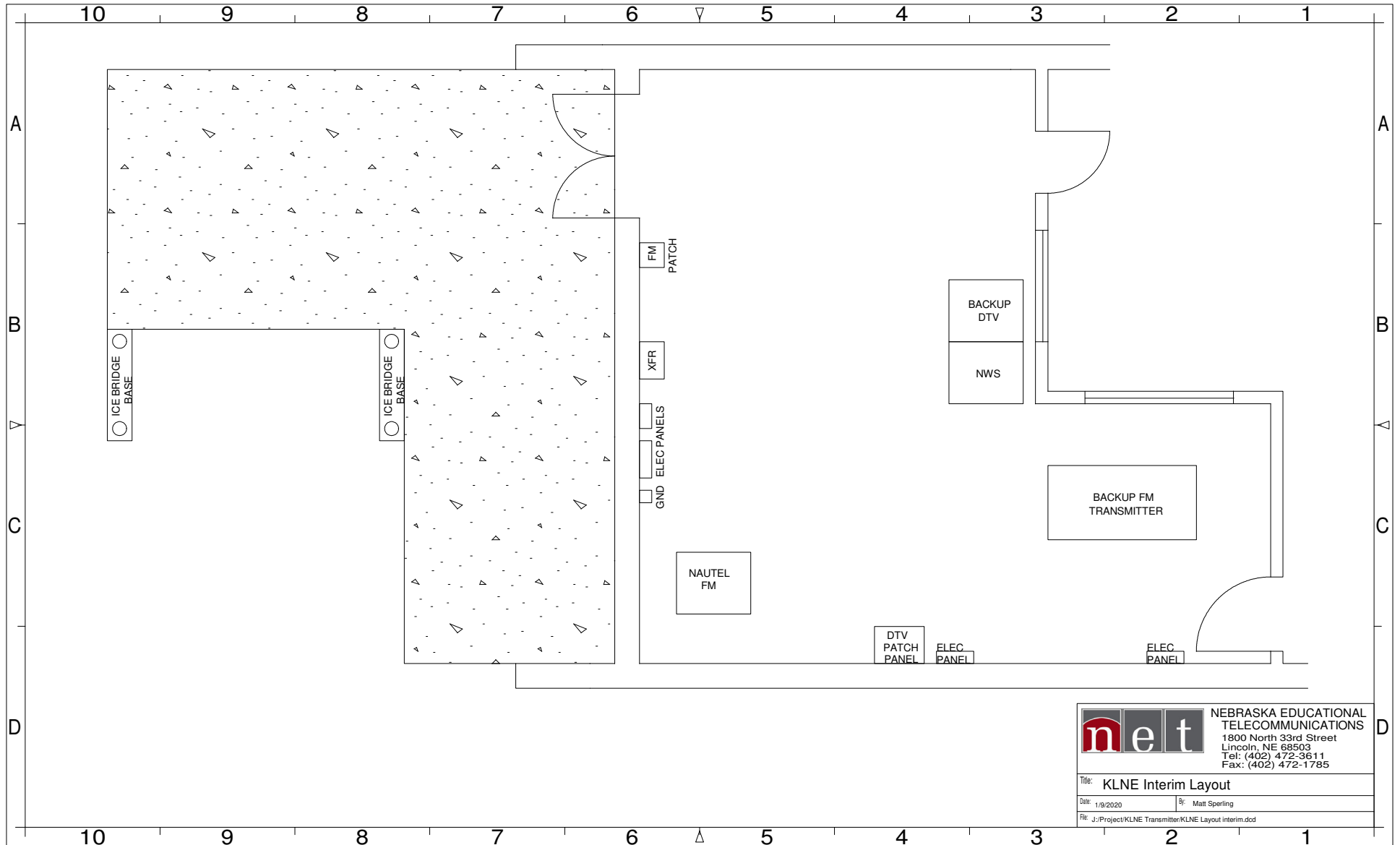



Attachment B



	NEBRASKA EDUCATIONAL TELECOMMUNICATIONS 1800 North 33rd Street Lincoln, NE 68503 Tel: (402) 472-3611 Fax: (402) 472-1785	
	Title: KLNE Interim Layout	
Date: 1/9/2020	By: Matt Sperling	
File: J:\Project\KLNE Transmitter\KLNE Layout interim.dcd		