

Appendix B

Licensing Hierarchy

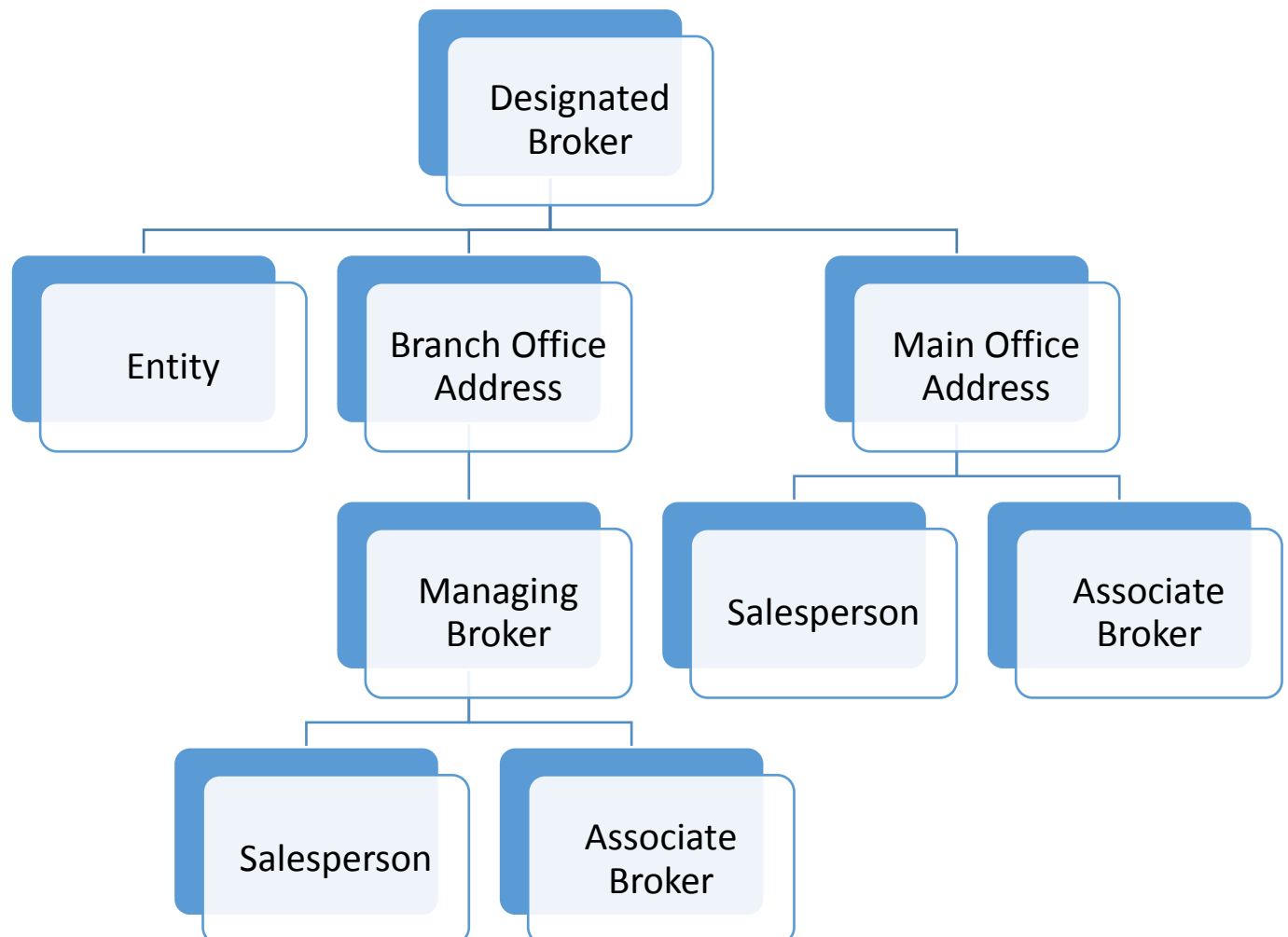
The Designated Broker is the responsible party, all **active** licensees must be a designated broker or be associated with (work under) a designated broker.

The Designated Broker will always have a Main Office address where affiliated licensees (salespersons and associate brokers) will conduct real estate activities.

The Designated Broker **may** open a “Branch Office” as another address where affiliated licensees may conduct real estate activities. If the Designated Broker has a Branch Office, a Managing Broker must be assigned (which is an associate broker under their supervision) or the Designated Broker may also be the managing broker of this branch office address. The designated broker may have multiple branch offices. Affiliated licensees may conduct real estate activities out of the Main Address or a Branch Office address.

A Designated Broker may set up an entity in a name (or multiple names) they wish to conduct business such as ABC Real Estate, Inc. The name is associated to the Designated Broker.

Inactive Licensees are still tracked and remain in the database, but are not associated with a designated broker.



Education Hierarchy

An active School/Provider must have an instructor and a course attached to it.

The School/Provider may also be an instructor.

School/Provider may have many instructors and courses attached to it.

A course may have many instructors.

****Conditional** - A Designated Broker will be attached to a course for approval purposes.

