

**Out of Balance Journal Entry**  
**Created on Friday, May 15, 2009**

---

## COPYRIGHT & TRADEMARKS

Copyright © 2003, 2007, Oracle. All rights reserved. Powered by OnDemand Software.  
Distributed by Oracle under license from Global Knowledge Software LLC. © 1998-2007. All rights reserved.

The information contained in this document is subject to change without notice. If you find any problems in the documentation, please report them to us in writing. This document is not warranted to be error-free. Except as may be expressly permitted in your license agreement for these Programs, no part of these Programs may be reproduced or transmitted in any form or by any means, electronic or mechanical, for any purpose.

If this documentation is delivered to the United States Government or anyone using the documentation on behalf of the United States Government, the following notice is applicable:

### U.S. GOVERNMENT RIGHTS

The U.S. Government's rights to use, modify, reproduce, release, perform, display, or disclose these training materials are restricted by the terms of the applicable Oracle license agreement and/or the applicable U.S. Government contract.

Oracle, JD Edwards, PeopleSoft, and Siebel are registered trademarks of Oracle Corporation and/or its affiliates. Other names may be trademarks of their respective owners.

### NIS Policies

The tasks in this documentation provide end users with the tools to enter data and collect data in NIS. It is the responsibility of the agencies to comply with State Statutes, Federal Rules and Regulations, and State policies. For further information concerning State Statutes and policies, please refer to both internal agency resources and the Department of Administrative Services website: <http://www.das.state.ne.us/>.

## Table of Contents

<b>Out of Balance Journal Entry.....</b>	<b>1</b>
<b>Out of Balance Journal Entry Report.....</b>	<b>1</b>



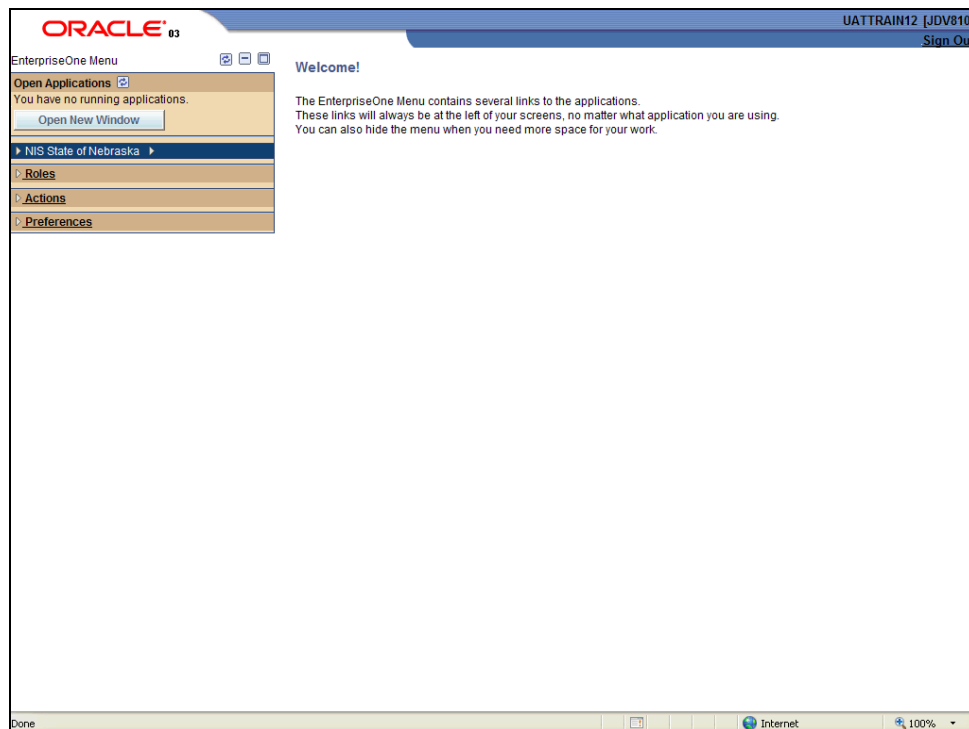
## Out of Balance Journal Entry

### Out of Balance Journal Entry Report

#### Procedure

This report automatically searches the journal for areas where the Debits do not match Credits and eliminates the tedious manual process of exporting the Journal to Excel and manually looking for the problem. The report identifies the employee involved in the imbalance.

Before running this report Journal Entries must have been processed in the Pay Cycle Workbench.

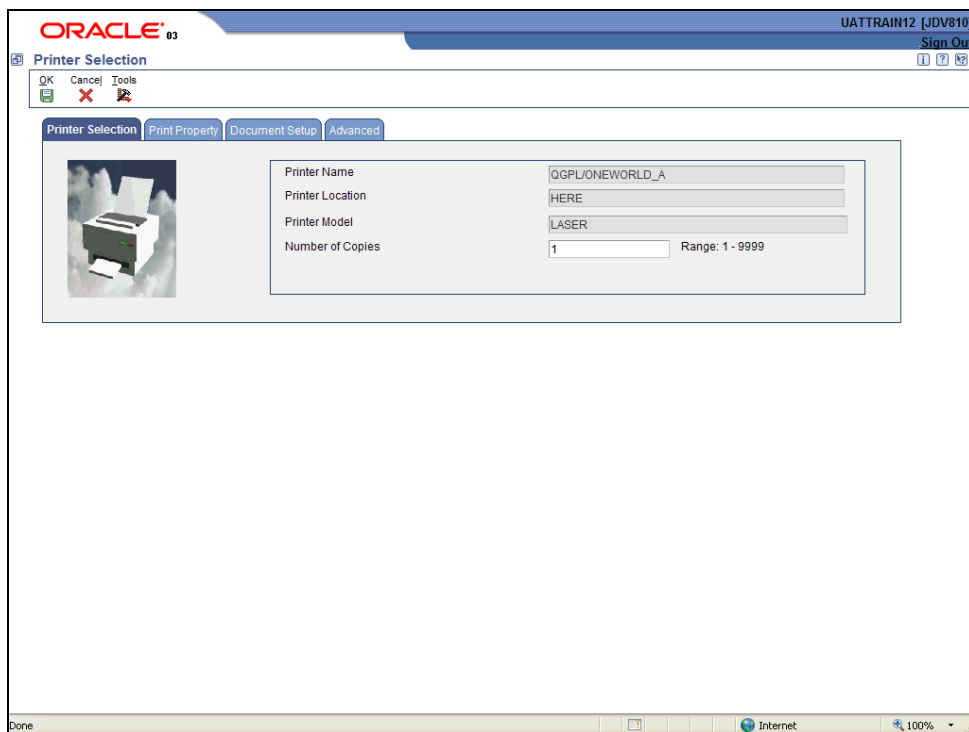



Step	Action
1.	Click the <b>NIS State of Nebraska</b> link. <b>NIS State of Nebraska</b>

# Training Guide

## Out of Balance Journal Entry

Step	Action
2.	Click the <b>Human Resources/Payroll - Agencies</b> link. 
3.	Click the <b>Payroll</b> link. 
4.	Click the <b>Out of Balance Journal Entry</b> link. 
5.	Click in the <b>Batch Number</b> field. 
6.	You can find your batch number via the online Journal review on the Pay Cycle Workbench.
7.	You will need to enter your batch number.  For this lesson enter " <b>1479132</b> ".
8.	Click the <b>OK</b> button. 



Step	Action
9.	Click the <b>OK</b> button. 
10.	You have successfully run the Out of Balance Journal Entry Report. To view the results you will need to go to View Job Status. <b>End of Procedure.</b>